

Modern Living

By Lana Thomas and Coralee Williams



In a world where we have access to whatever we want, what remains important is the role of nature in healing. Modern Living is all about living in harmony with the land and bringing nature into the living room.

The artworks within Modern Living are all derived from found and repurposed materials - including wall hangings, paintings, a lamp and Lana's diaries. Lana invites you to pick up her diary, turn its pages and enter her artistic imagination.

Coralee Williams is from Central Queensland and has a passion for exploring and the natural environment. She experiments with natural dyes and native timbers to create art pieces that allow others to immerse themselves in the natural world. Her vision is to inspire curiosity with practices that are traditional and environmentally friendly. She uses natural fabrics, found rusty objects, collected compost, native plants, roadside weeds, items from op-shops and tip shops, and anything she finds interesting.

Lana Thomas is a Bunurong woman from lutruwita/Tasmania. She mainly paints to destress and express, using watercolour paints and recycled canvases. She loves sitting outside with a cuppa in the sun and painting in her diaries when she has spare time.

Of her artworks Lana says "I wanted to represent myself, and combine the perceptions of myself, including the ones other people have of me." Lana's self-portraits challenge the expectations in modern life where many feel pressure to discern their self-identity.

Lana Thomas

'Sheldon'

Watercolour, acrylic, guache, on
recycled canvas.

\$50

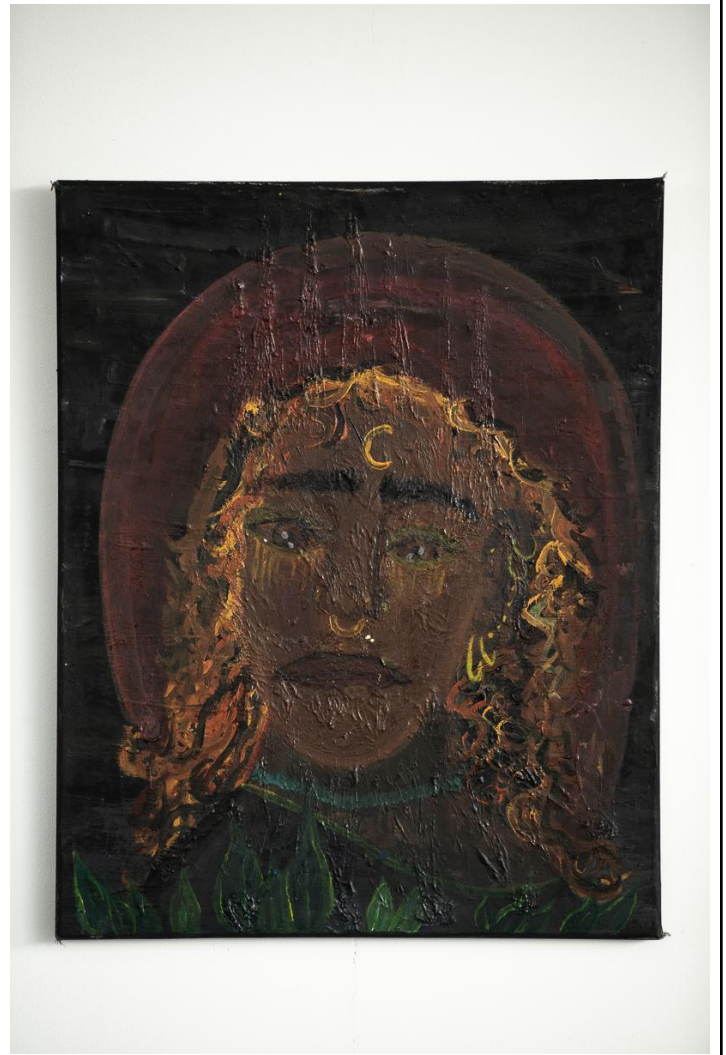


Lana Thomas

'Dreamtime Girl'

Watercolour, acrylic, guache, on
recycled canvas.

\$50

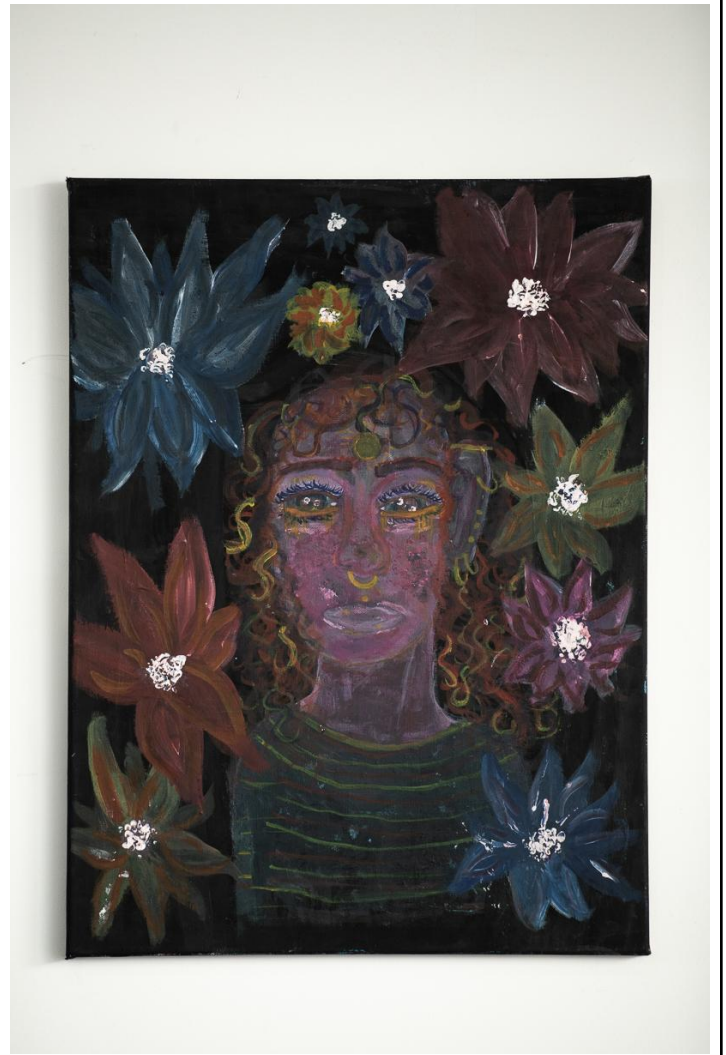


Lana Thomas

'Self Portrait'

Watercolour, acrylic, guache, on recycled canvas.

\$50



Lana Thomas

'No Face'

Guache and watercolour on recycled canvas.

\$50

Coralee Williams

'Illuminate'

Table lamp. I created the base at a class with Nanna B. It was then raku fired with a copper glaze. I found the driftwood on the bank of Carlton River and positioned them to hold the light bulb. This piece is not for sale but I am available for commission pieces.

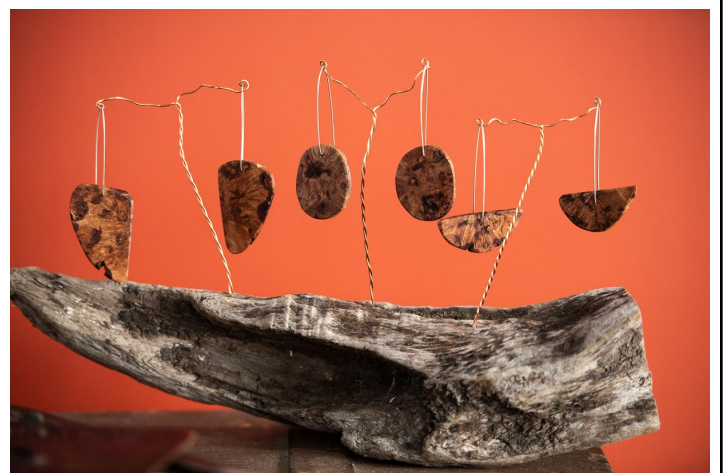


Coralee Williams

'Native Cherry burl earrings'

I hand cut and polish Native Cherry burls from local properties into light weight dangle earrings. These are finished with hand-formed sterling silver hooks.

\$75



Coralee Williams

'Golden Forest'

Silk hand-dyed with carrot tops from the Wobblestone food box, then bundle dyed with bracken in a eucalyptus and rusty brew. Displayed on bark with clips to transform into wearable art.

SOLD



Coralee Williams

'Forest Fire'

This hand dyed silk takes you into a bush fire. The blackness comes from the iron blanket I used in the bundling process along with eucalyptus, bracken fern and onion skins.

Displayed on driftwood found at Arthur River and held with clips to transform into wearable art.

\$150



Coralee Williams

'Sea dragon'

Silk eco-printed with seaweed from the Tasman Peninsula. An iron blanket was used to help influence the colour and details. Can you find the sea dragon!? Displayed on driftwood from Arthur River and held with clips to transform into wearable art.

\$150



Coralee Williams

'Mirrored Eucalyptus'

Silk eco-printed with eucalyptus leaves and bark, positioned to create a mirror image. I made the twine in Colombia from a large fique plant (similar to the agave plant). I used red annatto seeds from the area to dye the fibre, then twisted into long twine. The driftwood was found at Arthur River and held with clips to transform into wearable art.

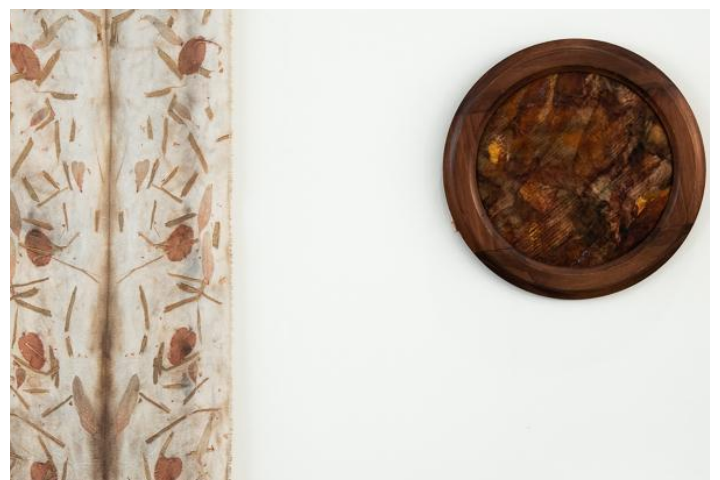
SOLD



Coralee Williams

'The Quarry'

Silk painted with natural dye powders from cutch, myrobalan, fustic, madder, and a pH modifier to shift the colours. The frame was bought at a local op-shop. This piece is not for sale but I am available for commission pieces.



Coralee Williams

'Blue Lagoon'

Watercolour paper painted with gardenia natural dye powder. Frame was bought at a local op-shop. This piece is not for sale but I am available for commission pieces.



Coralee Williams

'Two worlds'

Kelp basket/wall hanger embracing a rock that resembles a planet. I collected the rock in Vietnam and the kelp was collected on the Tasman Peninsula. Not for sale.

