

Perspective Pieces; Connections to Country.

By Aboriginal emerging artists Bianca Templar, Tess Parsons, George Kennedy, Jasmine Mansell

Our story began and progressed through conversations of sharing ideas and perspectives on our connections to places on Country. Since we were a group of four, Bianca suggested the idea of creating a jigsaw composition of joining four square canvases to create one large square. We created individual reflections and perspectives on our connections to country. Our works are connected by a replication of a Tasmanian Aboriginal Petroglyph.

Tessa Parsons is an emerging mixed media artist who grew up and recently returned to nipaluna (Hobart) after living in Sydney and Melbourne. With a passion for art, education, community and the environment, she's currently studying a Masters of Teaching. A lot of her artistic inspiration is drawn from reflecting on experiences with people and places.

George Kennedy is a local emerging artist and transgender man who's currently completing his fine arts Honours at UTas. His aim is to understand and communicate a shared connection to place with others. Practicing mostly in large mixed-media paintings, drypoint etchings made by carving aluminum plates with angle grinders and dremels, he attempts to subvert traditional Western landscape ideals of surveying, commodifying and owning.

Bianca Templar of Takamuna rrala designs is the proud granddaughter of respected Elder and sheller, Aunty Gloria Templar, descendants of the Trawlwoolway and Plangermaireener people of lutruwita (Tasmania). Bianca is a sheller (having been taught the practice as a young child), and also makes coil baskets, water carriers and jewelry and paintings that share and continue the culture of the palawa people.

To enquire/purchase artworks, contact Donna Mason via email on donna.m@nayriniaragoodspirit.com

Bianca Templar

CULTIVATE

Cultivate group piece

Acrylic on canvas

58.5cm x 58.5cm

\$300



Tessa Parsons

Landscape Collision

Cultivate group piece

Acrylic & gouache on canvas

58.5cm x 58.5cm

\$500



George Kennedy
Cultivate group piece
58.5cm x 58.5 cm
(enquire for details)



Jasmine Mansell
Mutton Bird Return
Cultivate group piece
Oil paint on canvas
58.5cm x 58.5cm
\$280



Tessa Parsons

Blue is the Colour of the Ocean

Hand cut and & digital giclee print

29.7 cm x 42cm

\$92



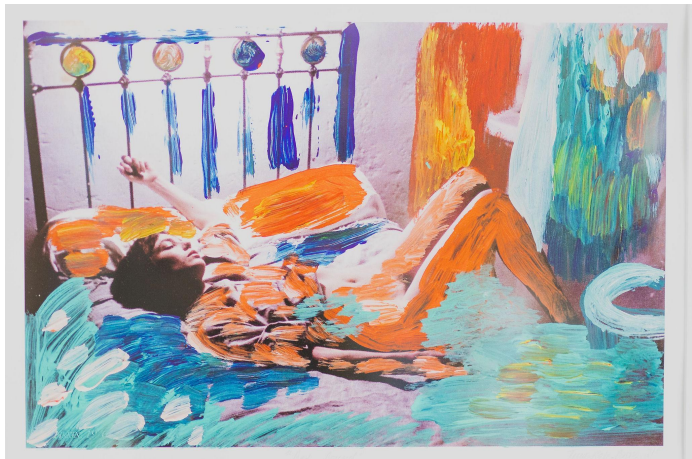
Tessa Parsons

Bed Bound

Hand cut and & digital giclee print

65cm x 43cm

\$220



Tessa Parsons

Blue Man & Watering Can

Hand cut and & digital collage,

giclee print

21cm x 29.7cm

\$81



Tessa Parsons

Cry Baby Cry

Digital illustration, giclee print

21cm x 29.7cm

\$81



Tessa Parsons

House on a Hill

Hand Cut & digital giclee print

43cm x 65cm

\$220



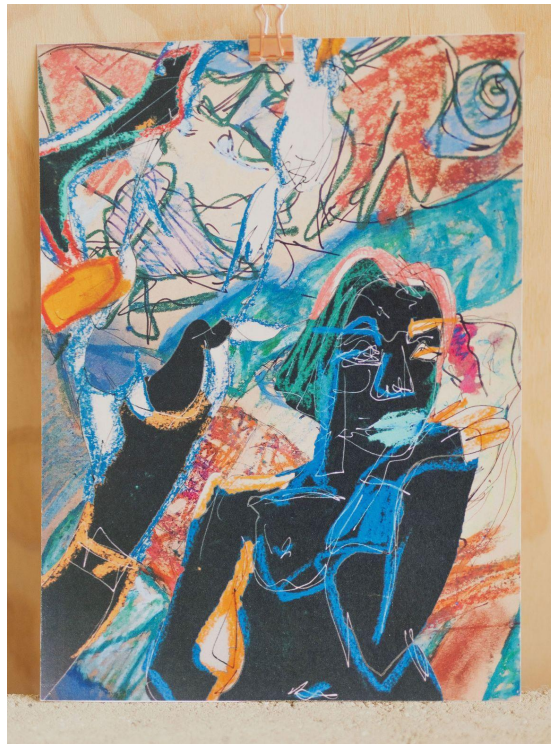
Tessa Parsons

Lady

Oil pastels & giclee print

21cm x 29.7cm

\$81



Tessa Parsons

Rock Perching (framed)

Hand Cut & digital giclee print

21cm x 29.7cm

\$92



Tessa Parsons

Squiggles

Giclee print

21cm x 29.7 cm

\$92



Bianca Templar

Grazing in the Grass

Acrylic on canvas

58.5cm x 58.5cm

\$300



Bianca Templar

Running River

29cm x 24cm

\$100



Bianca Templar

Sunrise over Kanamaluka

34cm x 34cm

\$130



Bianca Templar
The Night Sky
(enquire for details)



Bianca Templar and Jasmine
Mansell (Sunset Sisters)
'Sunset Journey'
\$300



George Kennedy
44cmx44cm
\$200



George Kennedy
30cmx30cm
\$100



George Kennedy
30cmx30cm
\$100



George Kennedy
30cmx30cm
\$100



George Kennedy
30cmx30cm
\$100



George Kennedy
30cmx30cm
\$100



George Kennedy
Untitled
30cm x 30cm
\$65



George Kennedy
30cmx30cm
\$100



George Kennedy
Untitled
30cm x 30cm
\$65

